

# kem Marine

MANUFACTURING COMPANY

MILWAUKEE, WISCONSIN



ICE BOAT

CATALOG NO. 2

## GENERAL INFORMATION

WHEN ORDERING, please give following information about each item:

1. Quantity wanted
2. Item number
3. Any additional information necessary, spring board, runner plank and mast dimension, etc.

### PRICES

All prices are F.O.B. Milwaukee, Wisconsin. Transportation charges to be paid by customer unless quoted otherwise. All prices subject to change without notice.

### TERMS

1/3 down, balance on delivery.

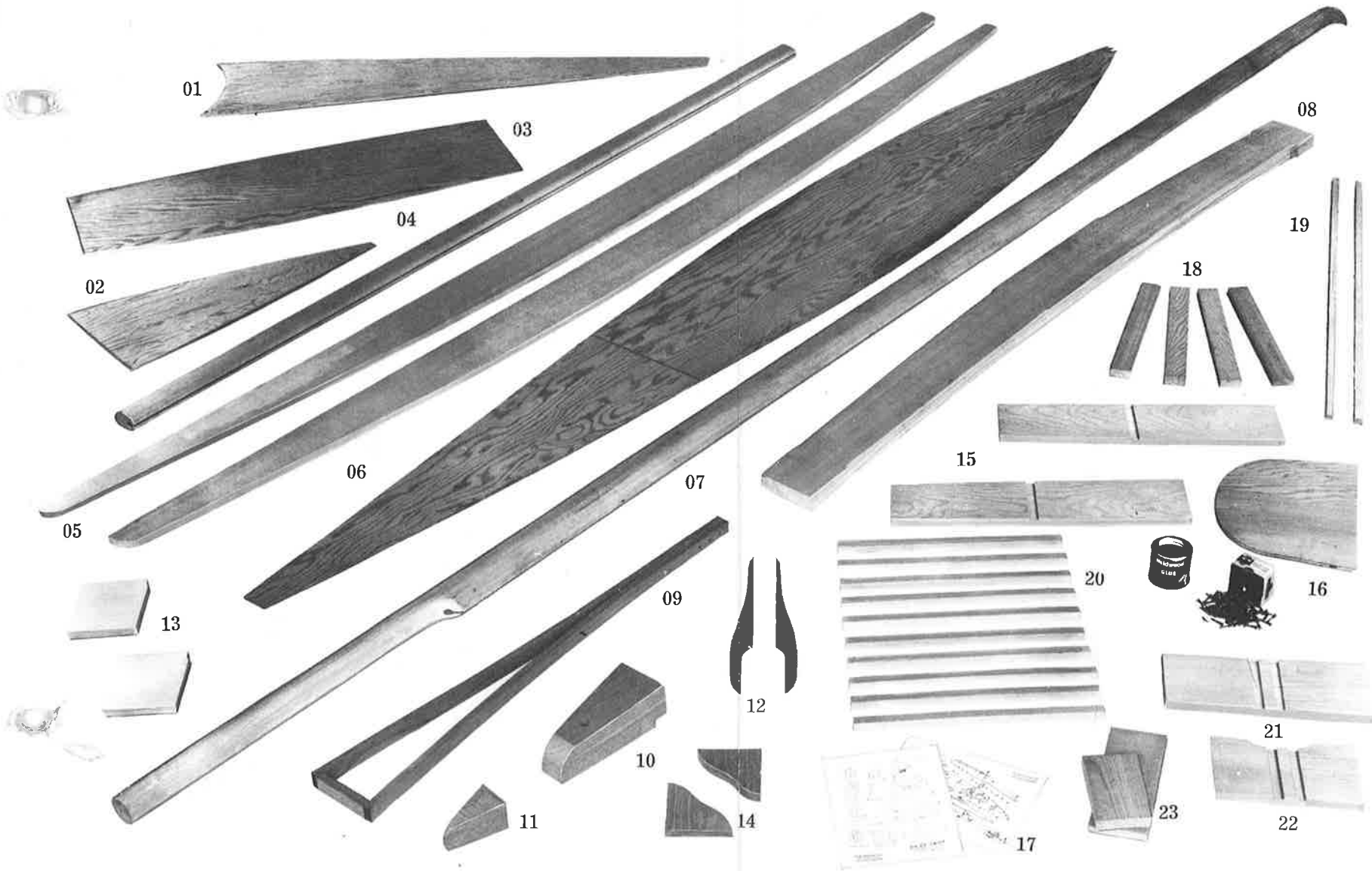
### CREDIT

Firms satisfactorily rated in Dun & Bradstreet or supplying satisfactory credit references will be shipped on open account. To avoid inconvenience of C.O.D. shipments we suggest that payment accompany your order.

### ROUTING

Unless advised with order, we will ship by most economical route.

RETURNED GOODS cannot be credited unless authority for such return first has been secured. All returned goods are subject to a handling and finishing charge.



DN's Complete, ready to sail - \$475.00

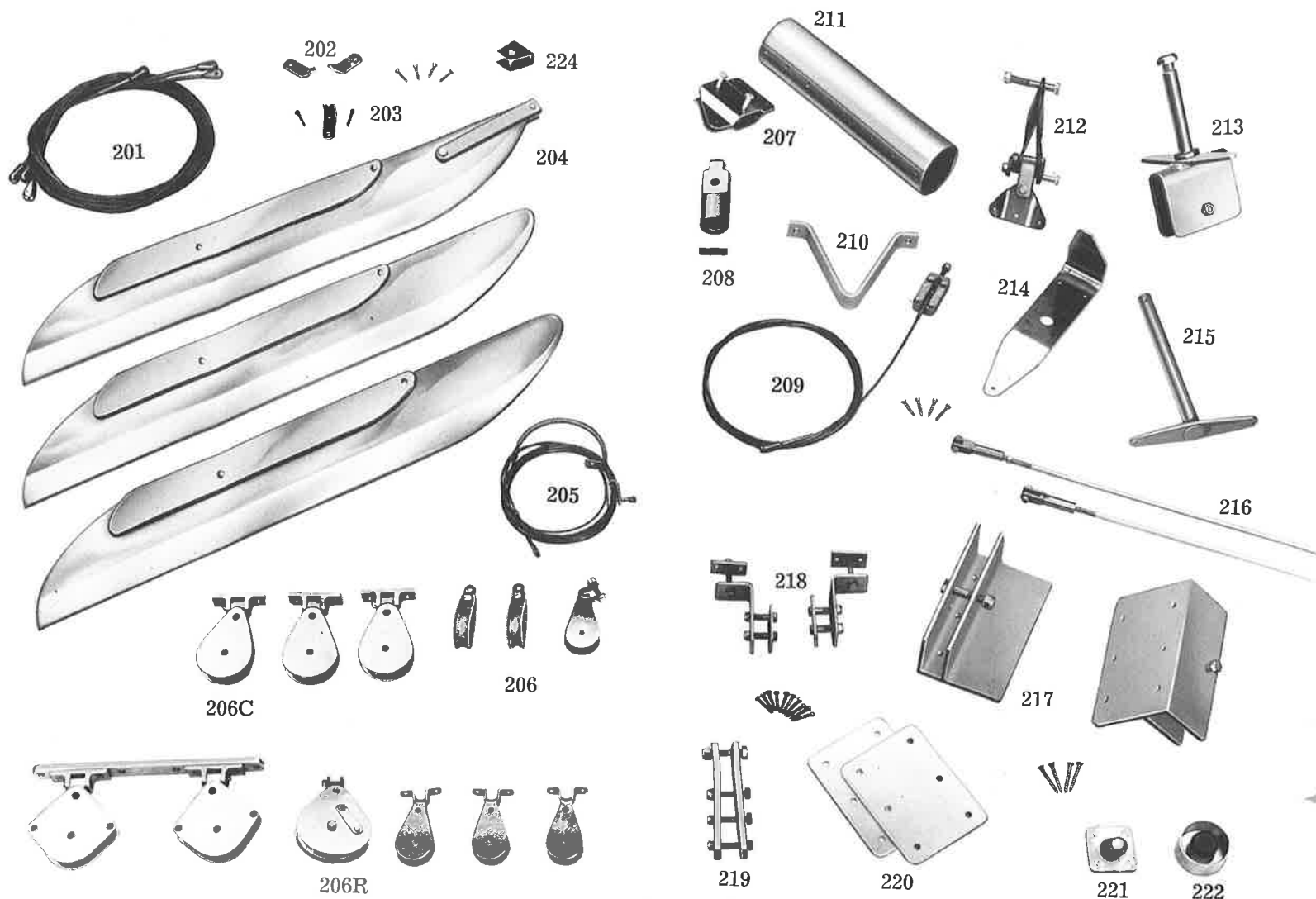
**DN WOOD PARTS**

- |   |                                    |                           |
|---|------------------------------------|---------------------------|
| 01 FORWARD DECK 1/4" Marine Ply.        | 10 WHITE OAK NOSE BLOCK            | 19 SEAT BOTTOM LISTINGS   |
| 02 REAR DECK                            | 11 WHITE OAK TAIL BLOCK            | 20 SEAT BOTTOM LISTINGS   |
| 03 COCKPIT SEAT BOTTOM 1/4" Marine Ply. | 12 WHITE OAK BOOM JAWS             | 21 BULKHEAD               |
| 04 BOOM Vert. Gr. Sitka Spruce          | 13 BULKHEADS Right and Left        | 22 BULKHEAD               |
| 05 HULL SIDES Vert. Gr. Sitka Spruce    | 14 WHITE OAK KNEES                 | 23 BULKHEAD               |
| 06 ONE PIECE BOTTOM 1/4" Marine Ply.    | 15 MAST REINFORCING Right and Left | 8 OUNCE TIN WELDWOOD GLUE |
| 07 MAST Vert. Gr. Sitka Spruce          | 16 SEAT BACK 3/4" Marine Ply.      | 1 BOX SCREWS              |
| 08 RUNNER PLANK Vert. Gr. Sitka Spruce  | 17 BULKHEAD                        |                           |
| 09 WHITE OAK TILLER                     | 18 RUNNER PLANK CLEATS             |                           |

PLANS Specifications, instructions and complete information for constructing a DN

324DN WOOD KIT PRICE .....	\$140.00	327DN SAILS — Dacron .....	\$110.00
325DN HARDWARE KIT .....	\$131.40	328DN SAIL BATTENS — Set of 4 .....	9.00
326DN WOOD AND HARDWARE KIT .....	\$265.00		

All wood parts are accurately machined from the finest materials available, and need only sanding before finishing.  
Parts priced individually on request.



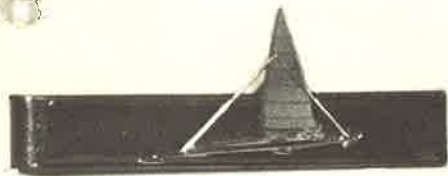
#### DN HARDWARE KIT

- |   |   |
|---|---|
| 201 SHROUDS, Set of 3—\$13.50                         | 211 MAST BAND—\$1.60  |
| 202 SIDE STAY TANGS, Set Stainless Steel—\$.80 Pr.    | 212 MAST HOUND—\$4.20   |
| 203 HALYARD CATCH—\$.60                               | 213 STEERING CHOCK, Plated—\$6.00                                   |
| 204 PLATE RUNNERS, Set of 3—\$40.00 Set               | 214 FRONT STAY TANG, Stainless Steel—\$2.60                         |
| 205 HALYARD AND TUBE—\$6.75                           | 215 STEERING POST, Plated—\$2.70                                    |
| 206 STANDARD DN BLOCKS—\$12.00 Set of 6               | 216 STEERING CONTROL, Set of 2—\$6.00 Pr.                           |
| 206C CUSTOM DN BLOCKS—\$28.00 Set of 5                | 217 SIDE CHOCKS, Set Plated—\$8.00 Pr.                              |
| 206R DN RATCHET BLOCK—\$13.50                         | 218 PLANK TO FUSELAGE ANGLE, Set, Stainless Steel—\$3.00            |
| 207 OUTHAUL SHEET LINE BRACKET—\$2.10                 | 219 TILLER STRAP, Set, Aluminum—\$1.80                              |
| 208 STEERING POST HEAD, Aluminum w/tapered pin—\$3.40 | 220 CHOCK CAP AND BOLT SET, Aluminum—\$2.00 Pr.                     |
| 209 BOB STAY—\$5.75                                   | 221 MAST STEP, Bronze, Complete w/screws—\$2.50                     |
| 210 BOB STAY STRUT, Aluminum—\$1.00                   | 222 MAST SOCKET, Brass—\$2.50                                       |
|   | 223 DECK PLATES, Stainless Steel, Set of 3—\$2.00 (Not Illustrated) |
|   | 224 SAIL TACK BRACKET, Stainless Steel—\$.60                        |

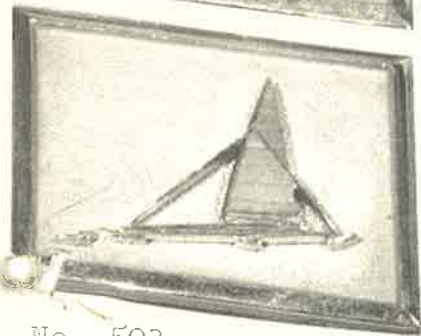
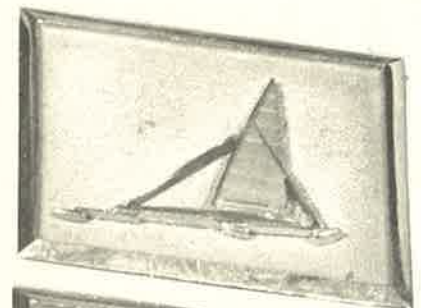
DN PLANS Specification, instructions and complete information for constructing a DN—\$.50 per set.



No. 502



No. 501



No. 503



No. 504

### PERSONALIZED JEWELRY

#### ITEM NO.

- |       |   |
|-------|---|
| 501yg | Lapel Pin                                       |
| 501wg | Lapel Pin                                       |
| 502   | Tie Bar — 14K wg Boat with yg filled bar        |
| 503   | Cuff Links — 14K wg Boat with yg filled backing |
| 504   | Charm — 14K wg                                  |

Engraving of your sail number included

**ITEM 100**

**CLASS E SKEETER — STANDARD MODEL**

Hull Length O. A. 22'  
Plank Length O. A. 18'  
Springboard Length O. A. 8'-6"  
Spar Length O. A. 24'  
Complete with 1 Sail and Hull Cover  
Unpolished Hardware

**ITEM 101**

(Pictured)

Custom Model, Same as above Model  
Includes: Fiber Glassed Hull, 2 Tone Paint, Custom Hardware  
(Polished)  
Other models and kits available upon request.

**ITEM 128**

HULL

Complete hull, spruce construction with foot and hand steering,  
painted.

**ITEM 130**

RUNNER PLANK

5½" Crown, 3" thick, 11½" wide, 18' long.

**ITEM 131**

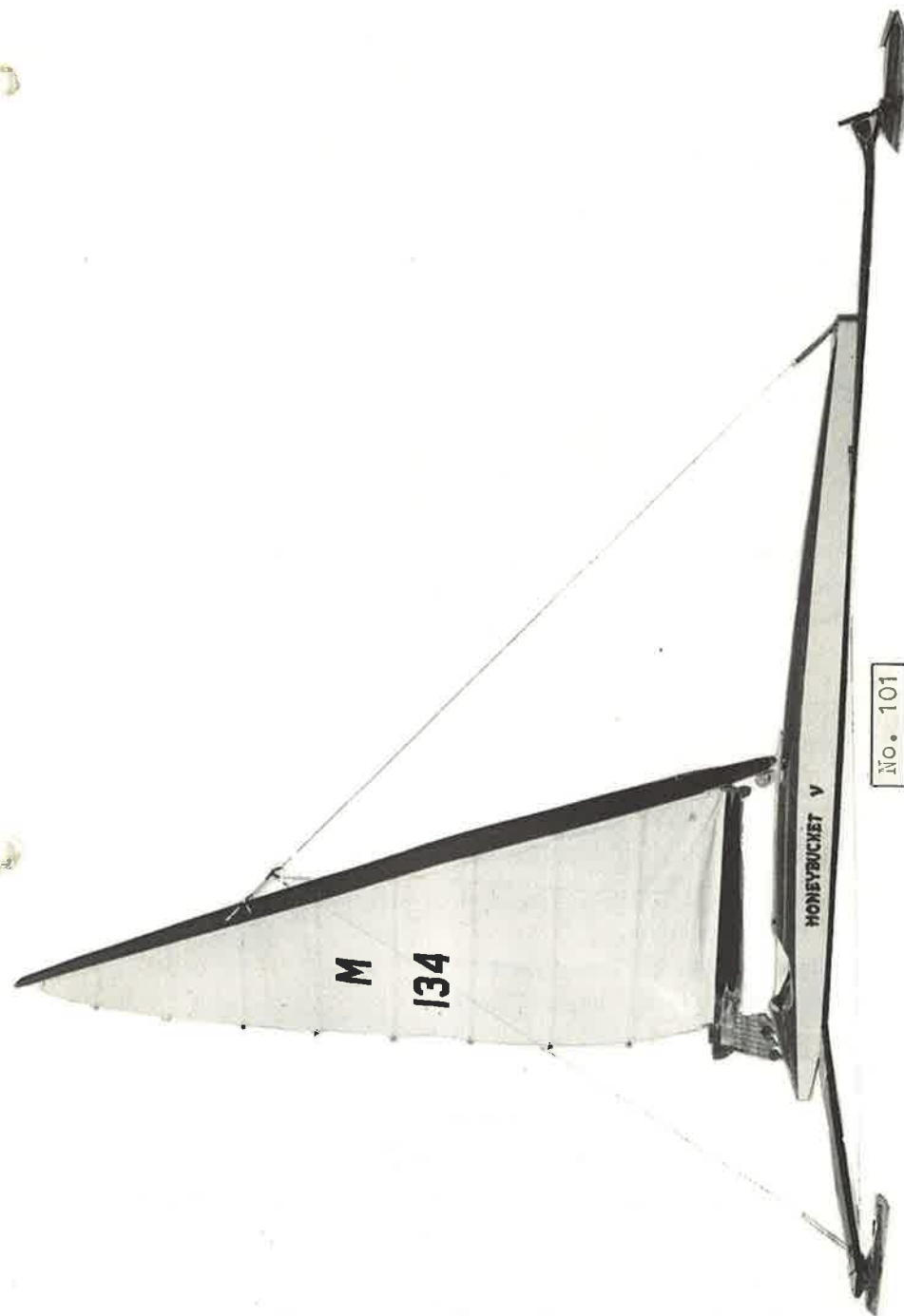
MAST

2¼" x 8" x 24' with aluminum sail tunnel  
Fittings not included.

**ITEM 132**

SPRINGBOARD

With Built-up front end to receive spring fork.



**ITEM 103**  
**PILLOW BLOCK CHOCK**

Aluminum Castings

Accurately machined with tapered roller bearings for take up,  
long life and positive alignment.

Complete with Aluminum top plate and bolts

Chock size —  $7\frac{1}{4}$ " x  $8\frac{3}{8}$ "

Base —  $4\frac{1}{4}$ " x 11"

Top Plate —  $6\frac{1}{2}$ " x  $7\frac{1}{2}$ "

Plank thickness from  $1\frac{3}{4}$ " -  $2\frac{1}{2}$ " (Specify when ordering)

**ITEM 102**  
**STANDARD SPRING FORK**

Accurately machined for positive control and ease in steering

Adds additional comfort and stability on rough ice.

Designed for  $\frac{3}{8}$ " or  $1\frac{5}{8}$ " blades (Specify)

**ITEM 102-C**

Custom Model, same as above, chrome plated.

**ITEM 104**  
**CUSTOM LINE RUNNERS**

Hardened steel blades sharpened to proper crown with one piece  
aluminum wing.

Complete with chrome plating

Side runners — 42" long, 4" high

Also available in  $4\frac{1}{2}$ " and 5" high

**ITEM 105**  
**STEERING RUNNER**

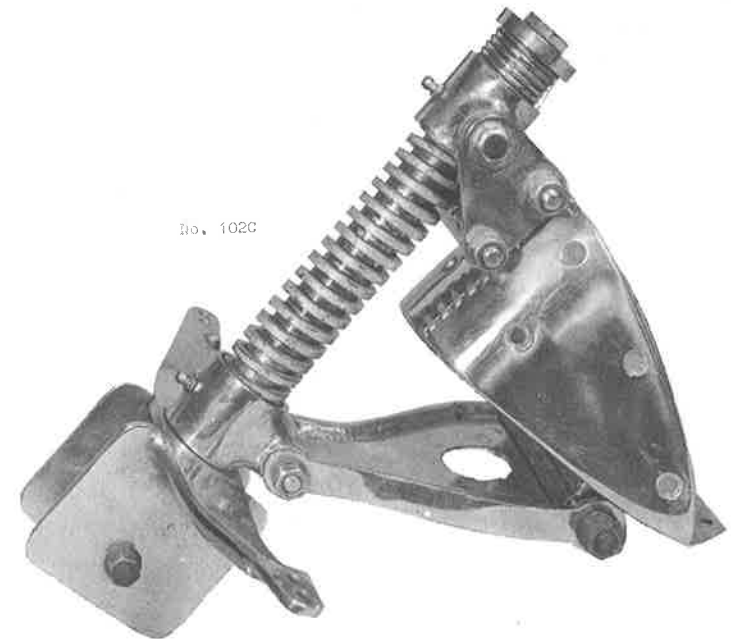
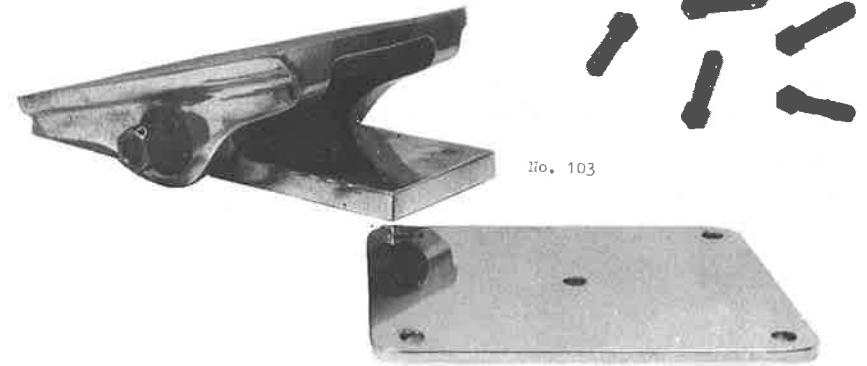
For  $\frac{3}{8}$ " or  $1\frac{5}{8}$ " chock (Specify chock width when ordering)

Brass wear plates on runner for  $1\frac{5}{8}$ " chock only

34" long, 4" high

Also available in  $4\frac{1}{2}$ " and 5" high

Other styles available



**ITEM 106**  
**ADJUSTABLE MAST STEP**

Aluminum Base and Ratchet Block Holder  
Bronze Ball — Chrome Plated  
Dimensions 3" x 18" x 7/8"  
Holes Space 1" O. C.  
Bottom Hollowed to fit deck crown  
Priced without ratchet block

**ITEM 107**  
**SLIDING GOOSENECK DOWNHAUL**

Stainless steel track  
Bronze downhaul slide and universal joint  
Chrome Plated  
Can also be used as a fixed downhaul  
Dimensions 1 1/2" x 16"  
Priced without boom block

**ITEM 111**  
**RATCHET BLOCK**

Enclosed ratchet block on hinge for ice boats

**ITEM 112**  
**DOWNHAUL BOOM BLOCK**

**ITEM 113**  
**SHROUD TERMINALS**

Heavy gauge stainless steel, oval tube  
Holes spaced 1" on center  
18" long

**ITEM 121**  
**ALUM. HALYARD CLEAT**

**ITEM 124**  
**BRONZE MAST SOCKET**

**ITEM 125**  
**STEERING WHEEL**

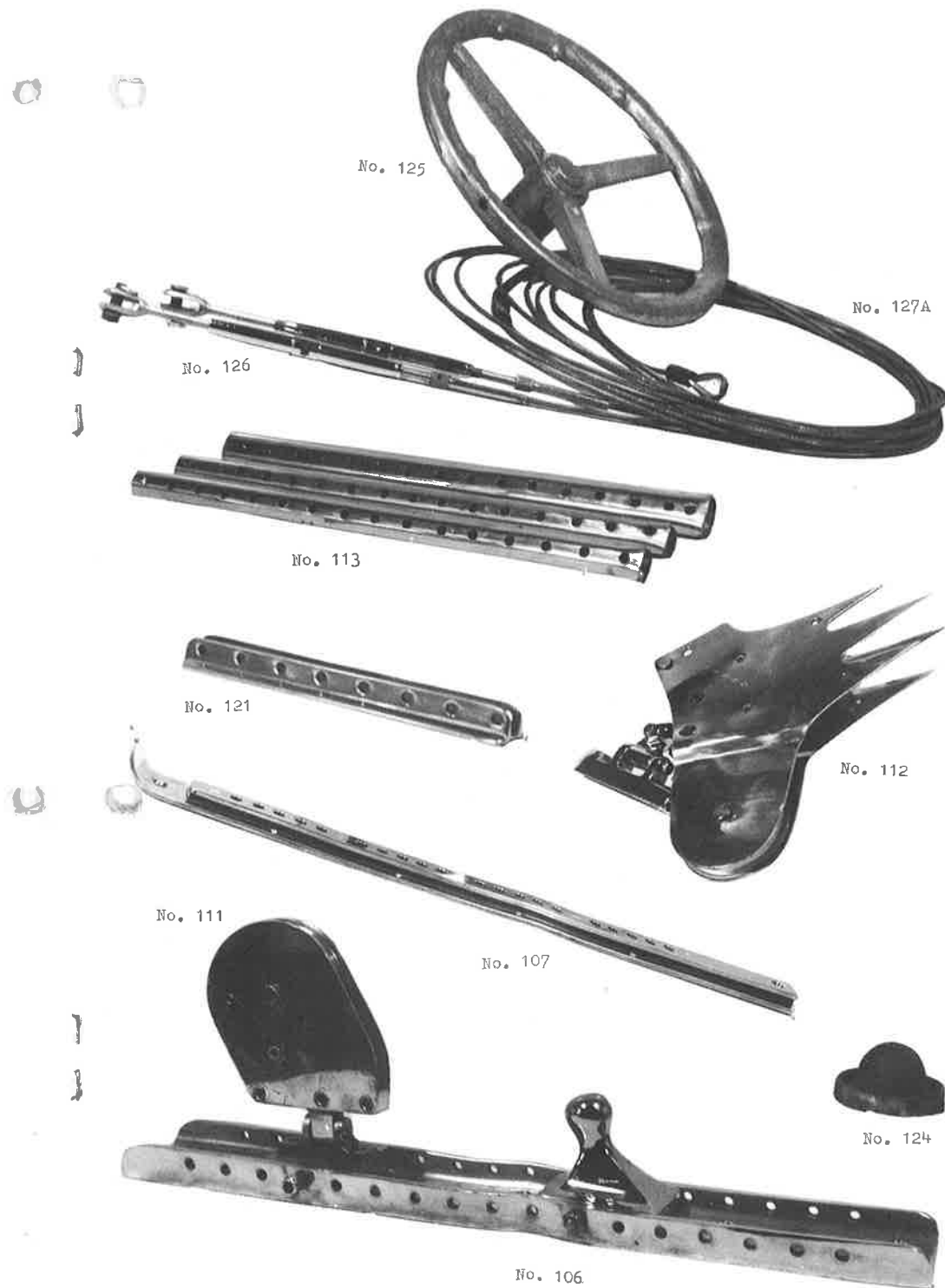
Worm Hub or Sprocket Hub with Bronze Post

**ITEM 126**  
**TURNBUCKLES**

Swedge type for 1/8" or 5/32" Cable  
Other sizes available

**ITEM 127A**  
**AIRCRAFT CABLE**  
1/8" Galvanized

**ITEM 127B**  
**AIRCRAFT CABLE**  
5/32" Galvanized





**ITEM 114**  
ALUMINUM RUNNER PLANK BRACKETS

**ITEM 115**  
ALUMINUM SAIL TUNNEL  
OD .625, ID .469 — .225 opening  
Stock sizes, — 10' and 12' lengths

**ITEM 116**  
ALUMINUM COCKPIT TRIM  
12' Lengths

**ITEM 117**  
STAINLESS STEEL MAST TANG  
Complete with bolts

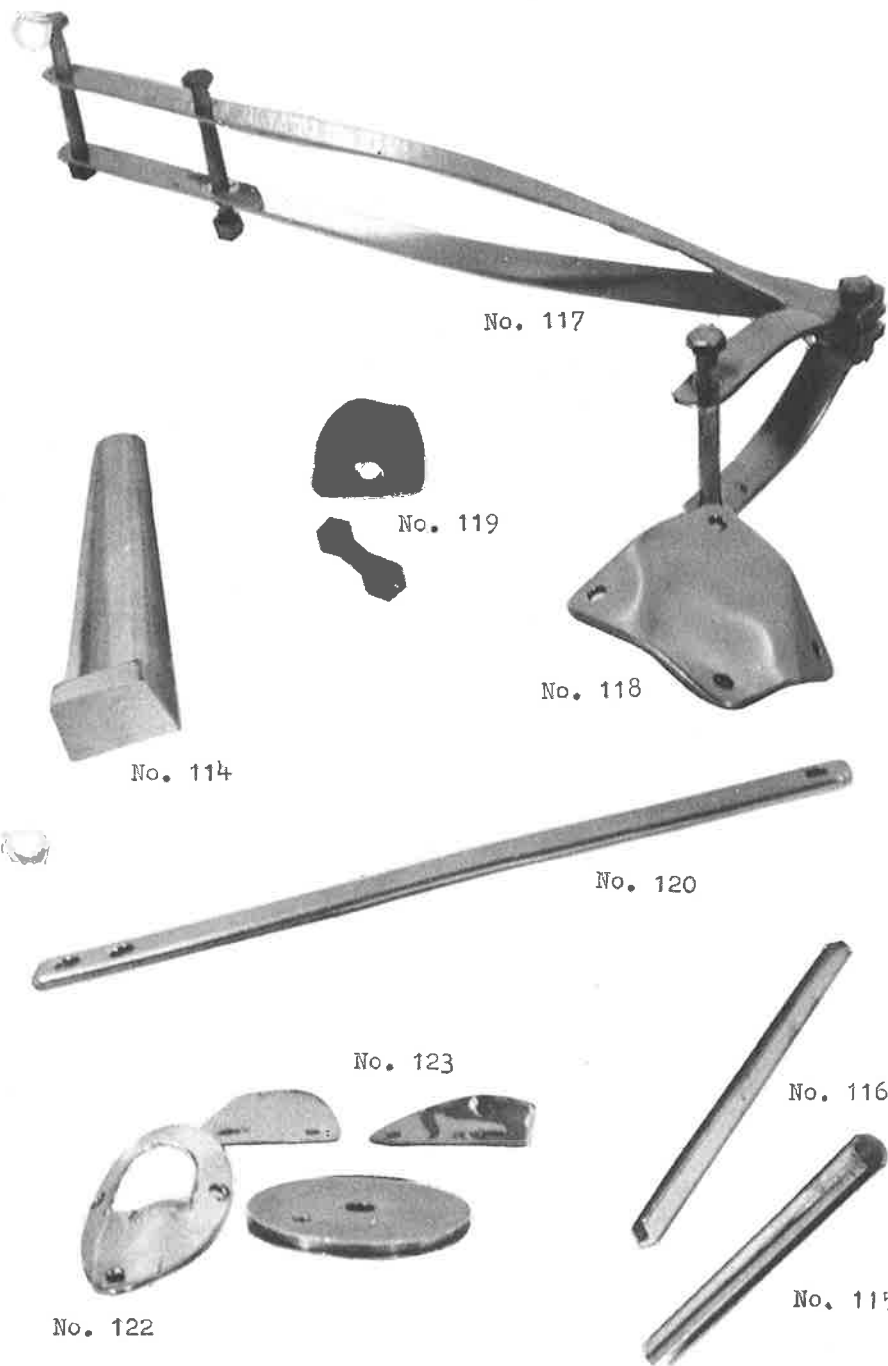
**ITEM 118**  
SHROUD ATTACHMENT  
Stainless Steel

**ITEM 119**  
SHROUD TANGS  
Stainless Steel

**ITEM 120**  
WHISKER STAY TANGS  
 $\frac{1}{8}$ " x  $\frac{3}{4}$ " x 8"  
Stainless Steel

**ITEM 122**  
ALUMINUM HALYARD TUNNEL GUARD

**ITEM 123**  
ALUMINUM HALYARD SHEAVE AND PLATES  
For  $\frac{1}{8}$ " Cable



**ITEM 108**

**DECK BLOCKS**

3 1/8" dia. for 3/8" rope

**ITEM 109**

**BOOM BLOCKS**

3 1/8" dia. for 3/8" rope

**ITEM 110**

**BOOM OR DECK TRACK**

28" — 32" length

**ITEM 138**

**CLASS E SKEETER PLANS**

**ITEM 139**

**BOAT KIT**

Model #100 complete with lumber, balk head layouts, spar and runner plank ready for painting. Hardware, sails and battens.

**ITEM 140**

**BOAT KIT**

Model #100 complete as above Item #139.  
Sails and battens not included. Standard hardware.  
Other kit prices on request.

**ITEM 133**

**BOOM**

13/16" x 7 1/2" x 8

**ITEM 135**

**SAILS**

75 sq. ft. E Class Dacron  
Other sizes available.



No. 108



No. 109



## PRICE LIST

ITEM NO.	PRICE
100	\$1800.00
100 Fiber Glassed Hull	1950.00
101	2200.00
102	115.00
102-C	140.00
103 per set	100.00
104 per set	170.00
105	85.00
106	18.00
107	22.50
108 ea.	7.50
109 ea.	7.00
110	12.00
111	15.00
112	22.00
113 set of 3	15.00
114 ea.	2.00
115 per Lin. Ft.	.65
116 per Lin Ft.	.35
117	14.00
118	4.00
119 ea.	1.50
120 ea.	2.00
121 ea.	3.00
122	1.50
123	2.50
124	2.50
125	12.00
126 ea.	8.00
127A per Lin. Ft.	.10
127B per Lin Ft.	.12
128 Hull	900.00
129 Hull Glassed	1050.00
130 Plank	150.00
131 Mast 24' (Other sizes avail.)	180.00
132 Springboard	75.00
133 Boom	21.00
134 Out Haul Plates Alum. set	6.00
135 75 sq. ft. Sail	180.00
136 Set Battens	18.00
137 Boom Bag	6.00
138 Plans	15.00
139 Boat Kit	1400.00
140 Boat Kit	1100.00
501 yg	10.00
501 wg	10.00
502	14.00
503	27.00
504	12.00

All prices are F.O.B. Milwaukee

## ORDER BLANK

ITEM NO.	QUAN.	PRICE

Name \_\_\_\_\_

Address \_\_\_\_\_

16 19 56  
80  
140  
76  
140

43  
86  
11  
1/4

# QUALITY ICE BOAT BUILDERS

72

4 1/2" = 12'

16

9 82

4.5

7 2 1/4

$$\frac{4.5}{12} = \frac{.5625}{X}$$

4.5 | 6.25  
4.5  
1.75

.14250  
5625  
67500

## KEM MARINE CO.

8728 N. Spruce Road

Milwaukee, Wis. 53217

William Kuemmerlein

Res. Area Code 414 — 352-1521

782-3360 8 10 5